

Pick & Carry Cranes

MC350 Pick & Carry Crane [35.0t]

The powerful MC350 pick and carry crane features a heavy lifting capacity of up to 35 tonnes and a 1395Ah battery, offering up to 8 hours of continuous operation.

This all electric heavy lifting machine features a lifting height of up to 16 metres and benefits from a small working footprint thanks to its slender 2250mm chassis, making it perfect for working in environments where working space may be confined.

A green zero emissions machine, the MC350 pick and carry crane is ideal for industrial environments, substations and working in ULEZ and clean air schemes to help customers reduce their carbon footprint without compromising on operational efficiency and lifting capacity.

The MC350 pick and carry crane also features a front wheel drive system with counter rotation for greater control and manoeuvrability, the machine's counterweights can be removed when required and outriggers can also be deployed in two positions (200/300mm) for increased stability.

An ideal choice for replacing machines such as telehandlers, forklifts, big cranes or carry deck cranes, pick and carry cranes of this type have proven to be a better choice in terms of performance, precision control of loads and compactness.



The MC350 Pick & Carry Crane comes with a full colour SLI system

Reference Code
MC350



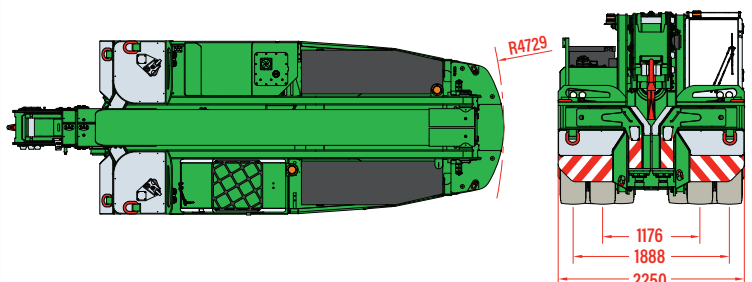
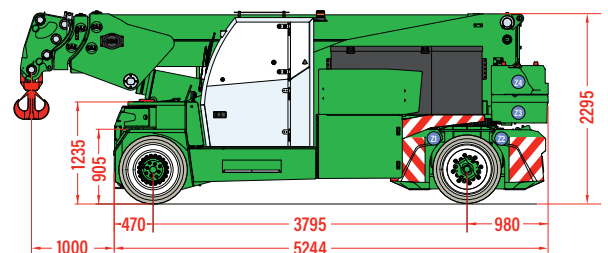
The MC350 Pick & Carry Crane can be fully controlled via radio remote with digital screen



Technical Specification

Capacity	35.0t x 1.0m (main hook, no outriggers) 35.0t x 1.5m (main hook, with outriggers deployed)
Maximum working radius	8.44m (hook), 9.43m (manual searcher) 11.44m (hydraulic fly jib)
Maximum lifting height	13.0m (hook), 14.0m (manual searcher) 16.0m (hydraulic fly jib)
Dimensions	6244mm (l) x 2250mm (w) x 2295mm (h)
Weight	31,560kg (with all counterweights and no attachments) 8700kg (total counterweights weight) 3000kg (Z1 & Z2 lower counterweights) 1500kg (Z3 lower upper), 1200kg (Z4 high upper)
Boom length	5.75 - 13.19m
Boom type	3 section box boom (1+2+3 hydraulic)
Derricking angle	-6° to 60°
Steering	Rear hydraulic 180° and directional front
Tyres	4 solid rear, 4 solid front
Drive motors	2 x AC 12kW 96V
Power source	96v 1395Ah rechargeable battery
Battery charger	415v (32amp supply required)
Travel speed	10km/h (Cabin Mode), 4km/h (Radio Remote Mode)
Gradeability	±15° (without load)
Standard equipment	safe load indicator, work lights, strobe lamp, fire extinguisher (powder), 2 x outriggers, reversing alarm, overload warning lamps, tie down/lifting points, anti-cable unwinding, emergency stop button, radio remote control, intelligent throttle, tiltable head and hook, chargers
Optional equipment	35t winch, 30t manual searcher hook, 17t extension, 10t hydraulic jib, 13.5t hydraulic jib, 17t forks, telemetry, low marking tyres

Technical Data (approx. mm)



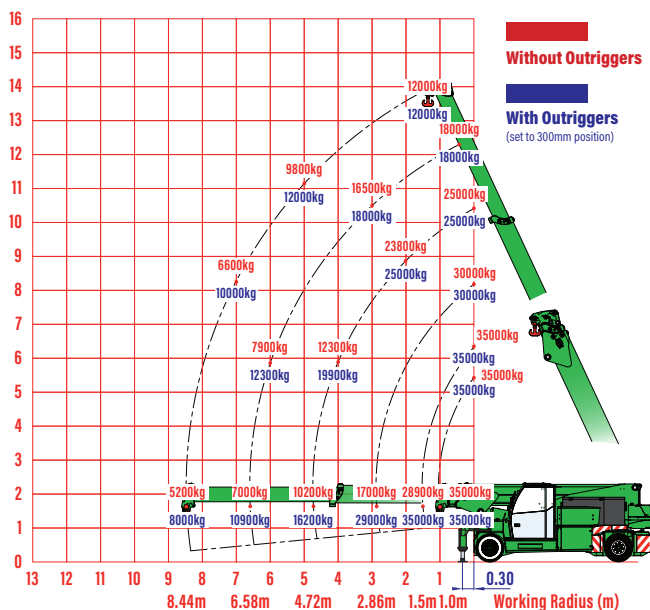
Fully battery powered and coming with a variety of hook options makes the MC 350 one of our most adaptable Pick & Carry Cranes.



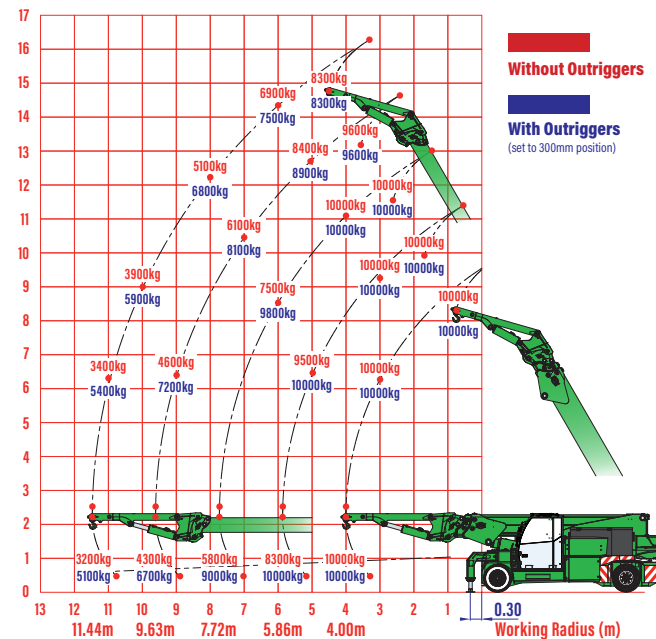
The MC350 Pick & Carry Crane comes with outriggers that when deployed increases the stability and capacity.



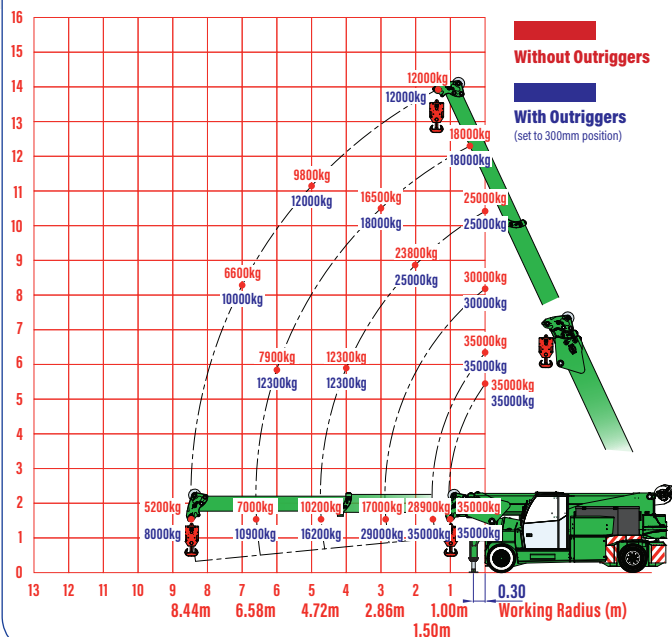
Main Hook Rated Loads



10T Hydraulic Searcher Hook Rated Loads



Winch Rated Loads



30T Manual Searcher Hook Rated Loads

