

# URW-706-2 & 706-2-VF

(6.0t x 3.0m)

- Total width 1.67m
- Max working radius 18.6m
- Diesel powered and optional mains electric
- Zero length increase with electric option
- Radio remote control as standard
- Working area limitation
- Stowable fly (extension) jib (optional)
- Searcher hook (optional)
- Slew limitation (optional)
- Intelligent throttle activation for economy and ecology



Safe load indicator



Variable Footprint safe load indicator

Max. Boom Length 19.2m

Max. Lifting Height 19.5m  
(25.2m with hydraulic fly jib)

Capacity 6.0t x 3.0m

Weight 8220 - 8670kg



With the ability to lift up to 6 tonnes, the URW 706-2 is able to lift to a maximum hook height of 25.9 metres, an extra 3 metres more than the standard model. This additional hydraulic searcher hook makes it a truly versatile machine and provides that extra reach for tricky lifting projects. The UNIC URW-706-2 can be controlled from the operators driving seat or by a fully functional radio remote control for precise placement of loads. Digital feedback and data logging are also available as extras where required.

## REMOTES



Standard radio remote control



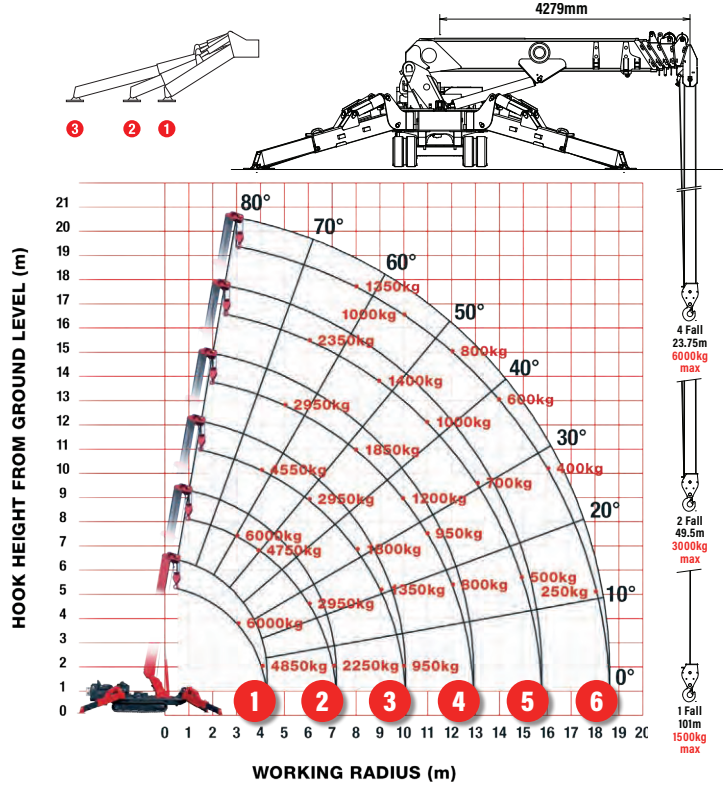
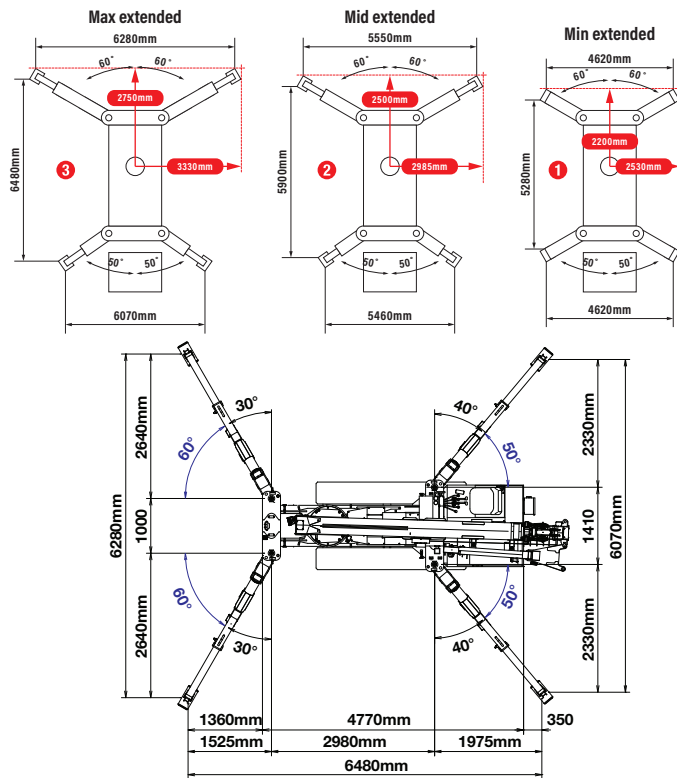
Optional radio remote control with digital feedback

## CRANE SPECIFICATIONS

<b>Crane capacity</b>	capacity:	6.0t x 3.0m
<b>Max working radius</b>	max:	18.6m
<b>Max lifting height</b>	approx:	19.5m (25.2m with hydraulic fly jib, 25.9m with fixed hook)
<b>Rope length</b>	max:	23.75m (4 fall), 49.5m (2 fall), 101m (1 fall)
<b>Dimensions</b>	folded:	5610mm (l) x 1670mm (w) x 2185mm (h)
<b>Weight</b>	unladen:	8220kg + 150kg (8370kg with electric option) + 300kg (8670kg with fly jib & searcher hook attached)
<b>Point loadings</b>	Due to the many variables involved, point loadings are only available on request	
<b>Hook speed</b>	approx:	11m/min (with 5 layers and 4 falls)
<b>Telescopic system</b>	boom length: telescoping speed: boom type:	4.80 - 19.20m 14.4m/52 seconds 6 section hydraulically telescoping boom, hexagonal box construction
<b>Derricking angle/speed</b>	approx:	0 - 80° /16.0 seconds
<b>Slewing angle/speed</b>	approx:	360° (continuous) 2.5min rpm
<b>Traction system</b>	drive: travel speed: gradeability: track ground length: track ground pressure: track width:	hydrostatic 2-speed, stepless forward and reverse 0 - 2.9km/h ± 20° (vertical) 20° (traverse) 2240mm 43.1kPa (0.44kg/cm²) 400mm
<b>Engine</b>	manufacturer: fuel: maximum output: starting method: tank capacity:	Kubota diesel (electric dual power option) 18.5kW/2200rpm electric 74 litres
<b>Electric motor</b>	power: voltage:	75kW 400v AC 50/60hz
<b>Standard equipment</b>	computer controlled moment limiter (safe load indicator), radio remote control, overwinding alarm, computer controlled intelligent voice warning system, multi-function operation by radio remote control, intelligent throttle activation, automatic hook stow, overload warning alarms, overload warning lamps, working area limitation, 800kg capacity hydraulic fly jib (706-2)	
<b>Optional equipment</b>	1 fall hook block, 2 fall hook block, mains electric dual power (400v), low marking tracks, slew limitation, searcher hook 800kg, fly jib 800kg with single part line, radio remote control with feedback display, data logging, forward facing camera, variable footprint option	

# MINI SPIDER CRANE

## RATED LOADS & OUTRIGGER POSITIONS



### FIRST STAGE EXTENDED 4.8m BOOM LENGTH

Working radius	m	up to 2.7	3.0	3.5	4.0	4.3
Outrigger	Max-extended	kg 6000	6000	5450	4850	3950
	Mid-extended	kg 6000	6000	5450	4850	3950
	Min-extended	kg 6000	6000	5450	4550	3750

### SECOND STAGE EXTENDED 4.8 - 7.7m BOOM LENGTH

Working radius	m	up to 2.0	3.0	3.5	4.0	5.0	6.0	7.0	7.2
Outrigger	Max-extended	kg 6000	6000	5350	4750	3750	2950	2250	2000
	Mid-extended	kg 6000	6000	5350	4750	3750	2450	1700	1550
	Min-extended	kg 6000	6000	5350	4650	2550	1650	1150	1050

### THIRD STAGE EXTENDED 7.7 - 10.6m BOOM LENGTH

Working radius	m	up to 2.7	4.0	5.0	6.0	7.0	8.0	9.0	10.0	10.1
Outrigger	Max-extended	kg 4550	4550	3650	2950	2400	1800	1350	950	950
	Mid-extended	kg 4550	4550	3650	2550	1750	1300	950	700	700
	Min-extended	kg 4550	4550	2650	1700	1200	850	650	450	400

### FOURTH STAGE EXTENDED 10.6 - 13.5m BOOM LENGTH

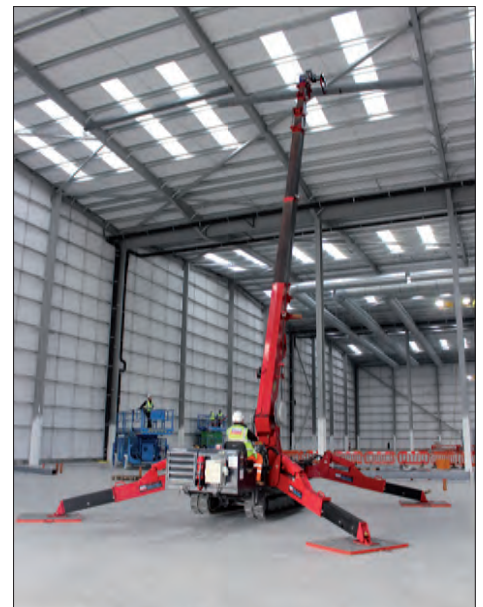
Working radius	m	up to 5.0	6.0	7.0	8.0	9.0	10.0	11.0	12.0	12.9
Outrigger	Max-extended	kg 2950	2550	2150	1850	1500	1200	950	800	450
	Mid-extended	kg 2950	2550	1850	1400	1100	850	650	550	400
	Min-extended	kg 2750	1850	1300	1000	750	550	430	330	240

### FIFTH STAGE EXTENDED 13.5 - 16.3m BOOM LENGTH

Working radius	m	up to 6.0	8.0	9.0	10.0	11.0	12.0	13.0	14.0	15.0	15.8
Outrigger	Max-extended	kg 2350	1700	1400	1200	1000	850	700	600	500	400
	Mid-extended	kg 2350	1600	1150	950	750	600	500	400	300	250
	Min-extended	kg 1950	1050	800	650	500	400	300	230	170	130

### SIXTH STAGE EXTENDED 16.3 - 19.2m BOOM LENGTH

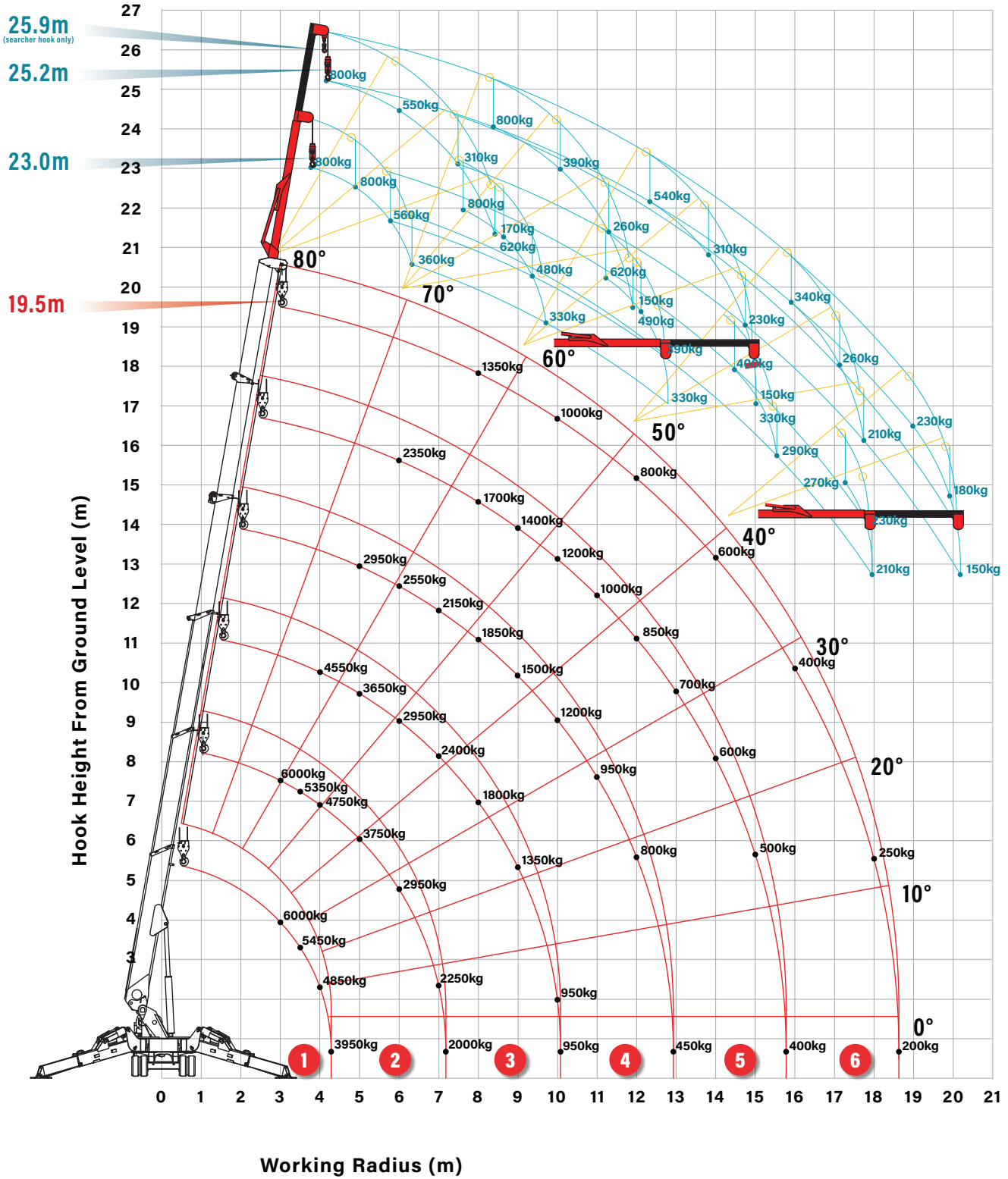
Working radius	m	up to 8.0	10.0	12.0	14.0	16.0	18.0	18.6
Outrigger	Max-extended	kg 1350	1000	800	600	400	250	200
	Mid-extended	kg 1350	1000	650	450	300	200	150
	Min-extended	kg 1100	700	450	280	170	90	60



# URW-706-2 & 706-2-VF

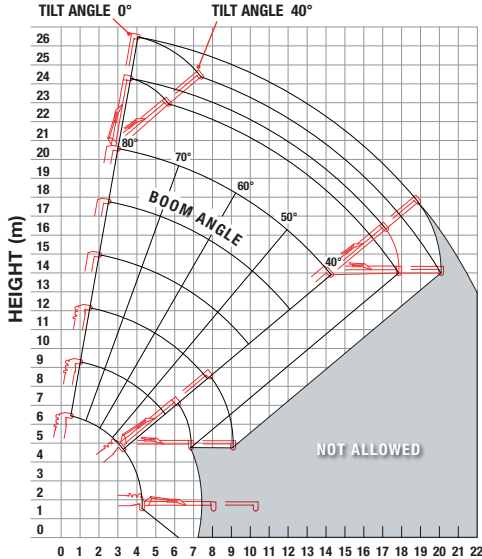
(6.0t x 3.0m)

## URW-706-2 WORKING RANGE

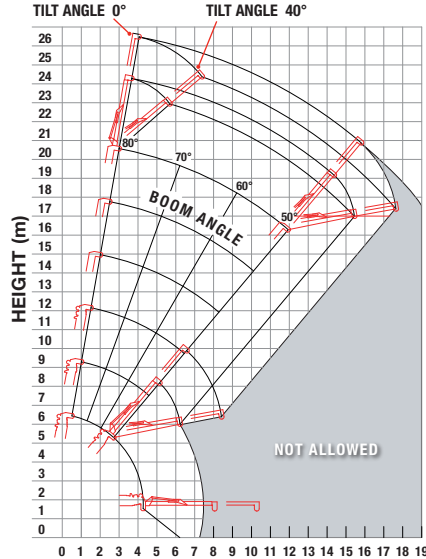




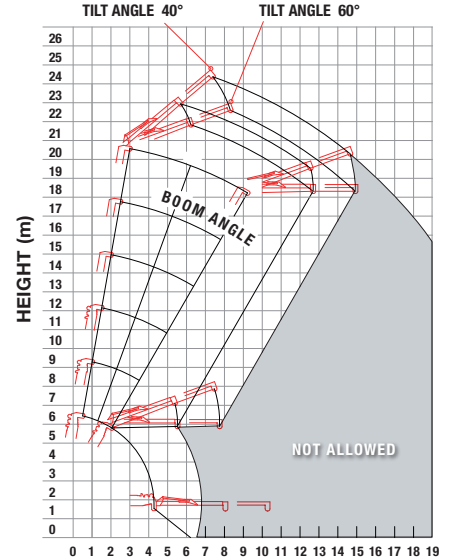
## URW-706-2 HYDRAULIC FLY JIB WORKING RANGE



**WORKING RADIUS (m) Tilt Angles 0° - 40°**  
Outriggers extended to maximum and halfway



**WORKING RADIUS (m) Tilt Angles 0° - 40°**  
Outriggers extended to minimum



**WORKING RADIUS (m) Tilt Angles 40° - 60°**  
Outriggers extended to maximum halfway and minimum

Note: The above figures are based on a no-load condition and do not include the deflection of the boom.

### FLY JIB NET RATED LOADS (kg) - ANGLE RATED OUTRIGGERS SET TO MAXIMUM

BOOM ANGLE	FLY JIB 1 (3.77m) - TILT ANGLES				FLY JIB 1 & 2 (6.0m) - TILT ANGLES			
	0°	20°	40°	60°	0°	20°	40°	60°
80°	800	800	560	360	800	550	310	170
70°	800	620	480	330	800	390	260	150
60°	620	490	390	330	540	310	230	150
50°	400	330	290		340	260	210	
40°	270	230	210		230	180	150	
30°	NOT ALLOWED				NOT ALLOWED			

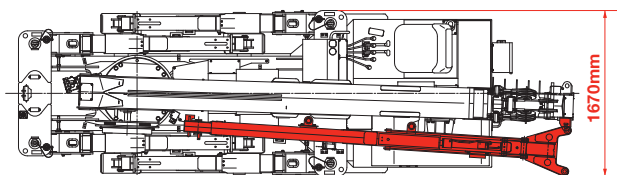
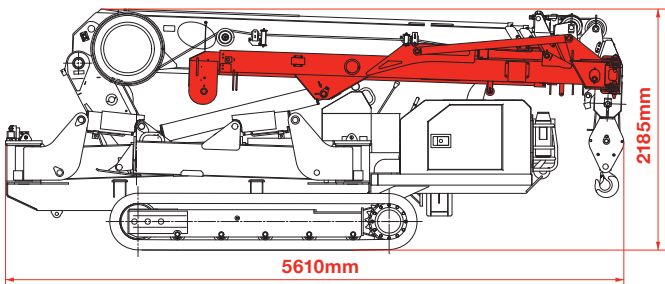
### FLY JIB NET RATED LOADS (kg) - ANGLE RATED OUTRIGGERS SET TO HALFWAY

BOOM ANGLE	FLY JIB 1 (3.77m) - TILT ANGLES				FLY JIB 1 & 2 (6.0m) - TILT ANGLES			
	0°	20°	40°	60°	0°	20°	40°	60°
80°	800	800	560	360	800	550	310	170
70°	800	620	480	330	800	390	260	150
60°	620	490	390	330	540	310	230	150
50°	350	310	290		300	260	210	
40°	180	170	160		160	130	120	
30°	NOT ALLOWED				NOT ALLOWED			

### FLY JIB NET RATED LOADS (kg) - ANGLE RATED OUTRIGGERS SET TO MINIMUM

BOOM ANGLE	FLY JIB 1 (3.77m) - TILT ANGLES				FLY JIB 1 & 2 (6.0m) - TILT ANGLES			
	0°	20°	40°	60°	0°	20°	40°	60°
80°	800	800	560	360	800	550	310	170
70°	800	620	480	330	800	390	260	150
60°	470	410	390	330	430	310	230	150
50°	200	190	180		180	160	150	
40°	NOT ALLOWED				NOT ALLOWED			
30°	NOT ALLOWED				NOT ALLOWED			

## URW-706-2 DIMENSIONS



Crane capacity	800kg (max)
Length	3770-6000mm
Weight	480kg
Tilt angles	0°, 20°, 40°, 60°