



6.26 | 14.42 | 17.40 | 17.45

FULL ELECTRIC



LITHIUM-ION
BATTERY



ZERO
EMISSIONS



LOW
NOISE LEVELS



2.6, 4.0, 4.2 & 4.5 ton
LIFTING CAPACITY



6, 14 & 17 m
LIFTING HEIGHT

FULL ELECTRIC

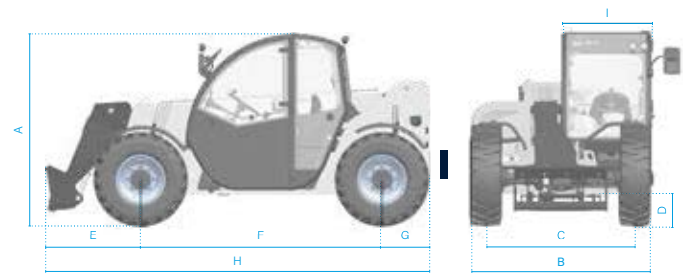
6.26



















MODEL		6.26
DIMENSIONS		
[A] Height	mm	1935
[B] Width	mm	1890
[C] Gauge	mm	1550
[D] Ground clearance	mm	220
[E] Front overhang	mm	990
[F] Pitch	mm	2525
[G] Rear overhang	mm	520
[H] Length	mm	4035
[I] Cabin width	mm	960
DETAILS		
Number of extracting sections	nr	1
Max capacity	kg	2600
Max lifting height	m	5.9
Max horizontal boom extension	m	3.2
Boom extension at max height	m	0.3
Swinging Angle	°	155
Weight	kg	4800
TANK CAPACITY		
Hydraulic oil tank	l	80
CONNECTION FOR EQUIPMENT		
FH		●
EURO		○

NOTE: Dimensions are based on the F6.26E model with 12-16.5 wheels

CONFIGURATIONS		FULL ELECTRIC
TRANSMISSION		
Transmission		electric
Speed	km/h	12
ENGINE		
Transmission	kW	30 (S2)
Hydraulic services	kW	18 (S3)
HYDRAULIC		
Pump type		gears pump
Hydraulic capacity	l/bar	80/230
TYRES		
12-16.5		●
12.5-18		○
435/50 19.5		○
Turning radius	m	3.25
OTHER		
Joystick		mechanical-electro proportional
Cabin		Queen cab
Quick coupling		○
Front and rear LED lights		○
Floating boom		○
Boom suspension		○
Manual 6-way diverter		○
PEB (Boom Electric Socket)		○
Front constant flow		○
Bucket mode		●
SPECIAL FEATURES		
Air conditioning		○
Forward buzzer avas		○
Farmatics		Full (2-5 years)



POWER AND BATTERY CAPACITY	24 kW/h (315 Ah)	32 kW/h (420 Ah)	43 kW/h (560 Ah)
AUTONOMY STANDARD CYCLE INTENSIVE (eco mode)	Up to 3 hours	Up to 4 hours	Up to 6 hours
AUTONOMY STANDARD CYCLE NOT INTENSIVE (eco mode)	Up to 6 hours	Up to 8 hours	Up to 11 hours

CHARGERS						
STANDARD ON BOARD MONO PHASE CHARGER			0-80%	6h	8h 50m	11h 20m
POWER INPUT	 16 A	 240 VAC	0-100%	8h 15m	11h 40m	14h 50m
POWER OUTPUT	 35 A	 80 VDC				
EXTERNAL THREE PHASES CHARGER 400V - 80A			0-80%	3h 10m	4h 30m	5h 40m
POWER INPUT	 18 A	 400 VAC	0-100%	4h 50m	6h 20m	8h
POWER OUTPUT	 80 A	 80 VDC				
EXTERNAL THREE PHASES FAST CHARGER 400V - 200A			0-80%	1h 10m	1h 40m	2h 10m
POWER INPUT	 43 A	 400 VAC	0-100%	2h	2h 45m	3h 40m
POWER OUTPUT	 200 A	 80 VDC				
ON BOARD FAST CHARGER			0-80%	2h 20m	3h	3h 50m
POWER INPUT	 16 A	 400 VAC	0-100%	3h 20m	4h 30m	5h 40m
POWER OUTPUT	 110 A	 80 VDC				

● Standard ○ Optional

MODELS		14.42	17.40	17.45
DIMENSIONS				
[A] Height	mm	2500	2500	2560
[B] Width	mm	2331	2331	2360
[C] Gauge	mm	1862	1862	1832
[D] Ground clearance	mm	280	280	340
[E] Front overhang	mm	2180	2330	2330
[F] Pitch	mm	2950	2950	2950
[G] Rear overhang	mm	1240	1240	1240
[H] Width with stabilizers	mm	3418	3418	3418
[I] Length	mm	6370	6520	6520
[L] Cabin width	mm	960	960	960

DETAILS				
Number of extracting sections	nr	2	3	3
Max capacity	kg	4200	4000	4500
Max lifting height	m	13.6	16.4	16.4
Max horizontal boom extension	m	9.75	12.6	12.6
Boom extension at max height	m	1.6	2.5	2.5
Swinging Angle	°	144	144	144

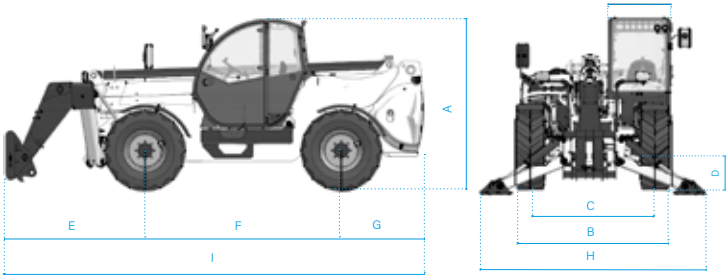
TANK CAPACITY				
Hydraulic oil tank	l	150	150	150

CONNECTION FOR EQUIPMENT				
FH		●	●	●

NOTE: Dimensions are based on models with 20" wheels

CONFIGURATIONS		FULL ELECTRIC
TRANSMISSION		
Transmission		electric
Speed	km/h	25
ENGINE		
Transmission	kW	51 (S1)
Hydraulic services	kW	23 (S1)
HYDRAULIC		
Pump type		gears pump
Hydraulic capacity	l/bar	120/250
TYRES		
405/70 20		●
405/70 24		○
445/65 R22.5*		○
Turning radius	m	4.2
OTHER		
Joystick		mechanical-electro proportional
Cabin		Queen cab
Quick coupling		○
Front and rear LED lights		○
Floating boom		○
Boom suspension		○
Manual 6-way diverter		○
PEB (Boom Electric Socket)		○
Front constant flow		○
Bucket mode		●
SPECIAL FEATURES		
Air conditioning		○
Forward buzzer avas		○
Farmatics		Full (2-5 years)

* standard on 17.45



POWER & BATTERY CAPACITY	45.6 kW/h (105 Ah)
AUTONOMY STANDARD CYCLE INTENSIVE (eco mode)	Up to 3h 30m
AUTONOMY STANDARD CYCLE NOT INTENSIVE (eco mode)	Up to 8h

CHARGERS		
STANDARD ON BOARD MONO PHASE CHARGER 11 KW		
POWER INPUT	⚡ 16 A ⚡ 220 VAC	20-80% 12h
POWER OUTPUT	⚡ 4 A ⚡ 435 VDC	0-100% 27h
STANDARD THREE-PHASE CHARGER ON-BOARD 11KW		
POWER INPUT	⚡ 16/32 A ⚡ 400 VAC	20-80% 3h
POWER OUTPUT	⚡ 22 A ⚡ 435 VDC	0-100% 5h 30m
OPTIONAL SINGLE-PHASE CHARGER ON BOARD 22 KW		
POWER INPUT	⚡ 16 A ⚡ 220 VAC	20-80% 12h
POWER OUTPUT	⚡ 4 A ⚡ 435 VDC	0-100% 27h
OPTIONAL THREE-PHASE 16A CHARGER ON BOARD 22 KW		
POWER INPUT	⚡ 16 A ⚡ 400 VAC	20-80% 3h
POWER OUTPUT	⚡ 22 A ⚡ 435 VDC	0-100% 5h 30m
OPTIONAL THREE-PHASE 32A CHARGER ON BOARD 22 KW		
POWER INPUT	⚡ 32 A ⚡ 400 VAC	20-80% 2h
POWER OUTPUT	⚡ 37 A ⚡ 435 VDC	0-100% 3h 30m
50KW DC COLUMN		
POWER INPUT	⚡ 50Kw	20-80% 1h 30m
POWER OUTPUT	⚡ 50 A (variables)	0-100% 2h 30m



The Full Electric Range from Faresin, launched in 2018 with the world's first fully electric telehandler, the F6.26E, is a technological revolution. Due to the success of the F6.26E and today's environmental challenges, the power of electric has been adopted onto the larger machines, the 14.42, 17.40 and the 17.45. These new machines represent Faresin's continued commitment to the need for effective sustainability and respect for the environment, without sacrificing power and performance.

The zero CO² emissions nature of these impressive machines allow them to be used in closed environments, such as warehouses, logistics areas, shopping centres, factories, railway stations, power stations and much more, improving the level of comfort and safety in the working environment. The benefit of a reduced noise level allows it to operate in environments and workplaces, where the use of ICE (Internal Combustion Engines) powered machines is not viable.

The Full Electric Range of telehandlers can be used in any working condition thanks to its manoeuvrability and its 4-wheel steering with all-wheel drive.

IDEAL FOR ECO-CONSCIOUS SITE REQUIREMENTS

The Full Electric Range of telehandlers are perfect for jobs that require environmental impact assessment and sustainability.

IMPROVED OPERATOR COMFORT, WHATEVER THE WEATHER

The optional air-conditioning is a heating and ventilation system designed to work perfectly 365 days of the year. Easy regulation to find the right temperature for your working needs, in all conditions.

WORKS WHERE DIESEL TELEHANDLERS CAN'T

The Faresin Electric Telehandler Range is suitable for any type of application where the use of a combustion engine is not viable.

- Construction sites
- Shopping centres
- Recycling centres
- Logistics centres
- Agriculture
- Organic Farming
- Greenhouses
- Cold Store
- Rail Infrastructure
- Power Infrastructure
- Underground areas

POWER AND PERFORMANCE WITHOUT THE NOISE

The Electric Range gives operators the same performance as a conventional telescopic handler without the noise of a combustion engine.

REDUCED OPERATING COSTS COMPARED TO DIESEL MACHINES

The greater investment in the purchase of a Full Electric Telehandler is offset on average after about 2 years of work, combined with the zero maintenance associated with diesel engines of conventional telehandlers.





FULL ELECTRIC 14.42 | 17.40 | 17.45

A range created for great heights and max performance, with a three-section boom for a maximum lifting height of 17 meters and a maximum capacity of 4.5 tons. Front stabilizers and tilt correction systems ensure better performance and greater stability when lifting at high heights on any terrain.

TOTAL POWER

The centerpiece is the 45 kW/h, 435 V high-voltage lithium-ion battery that powers two electric motors, 51 kW for transmission and 23 kW for lifting. Power is delivered only when required, avoiding waste of energy and further extending battery life.

Thanks to this extraordinary power, the performance of the new Big Range of Full Electrics is in no way inferior to that of the diesel engine versions. In fact, the optimized management of the transmission allows a peak traction force of 44.3 kN and the maximum speed is 25 km/h, managed by a two-speed gearbox.

UNIVERSAL CHARGE

Battery charging has never been easier. The onboard system allows batteries to be recharged with maximum flexibility, thanks to a single plug-in interface on the machine and a free choice of power supply: 220V single-phase, 400V three-phase and an optional fast charging station that enables users the ability to charge quickly while having a break during the working day. The Wallbox is supplied as standard.



FAR FULL EU

FULL ELECTRIC 6.26

Swift, powerful and sustainable. The F6.26E Full Electric Telehandler is suitable for any type of use thanks to its lifting capacity of 2.6t and a maximum height of 6 meters. Twin to its diesel engine version, it was designed to be the uncompromisingly ecological alternative.

It is the first Full Electric Telehandler to be mass-produced globally according to unrivalled build quality standards.

SILENT POWER

The centerpiece is the 80 V and 315, 420 or 560 Ah lithium battery kit that powers two electric motors, 30 kW for transmission and 18 kW for lifting. Power is delivered only when required, avoiding waste of energy and further extending the battery life.

4 TYPES OF CHARGING

Take advantage of the Fast Charger and shorten the charging time during the work cycle. Use classic charging overnight or the standard onboard charger located on the machine.

Four charging systems are available: integrated in 7.5 hours, fast integrated 110 A in 3 hours, external 80 A within 5 hours and Fast 200 A to charge within 2 hours.

SAFE AND PRECISE MOVEMENTS

The hydraulic system is the real muscle of the Full Electric Telehandlers. In this new range, an intelligent and powerful hydraulic system has been developed that allows for a flow rate of 120 l/min and a maximum pressure of 250 bar.

The variable displacement pump and the proportional electro-hydraulic flow sharing distributor guarantee significant energy savings, simultaneous movement and precise control.



ESIN LECTRIC

VERSATILE AND RELIABLE

Thanks to its manoeuvrability and 4-wheel drive, the Full Electric 6.26 Telehandler can be used under any working conditions in closed environments such as warehouses, logistics areas and in agricultural activities, improving the level of comfort and safety in the working area.

Its reduced noise level allows to operate in environments and workplaces where the use of diesel engines is not viable.

Not limited to indoor areas, the F6.26 can easily handle outdoor environments. Whatever the weather and whatever the terrain, the F6.26E is just as capable as its diesel twin. The F6.26 is perfect for working in agricultural sites, with livestock and operators both feeling the benefits of the zero CO₂ emissions the F6.26 gives.



**FAR
MATICS**
POWERED BY FARESIN

Managing company machinery, exchanging information, optimising maintenance and preventively monitoring problems, will be the standards of the near future. All models in the FS range are ready for the upcoming integrations. Faresin recommends protecting the machine's value by strictly following the scheduled maintenance suggestions provided by the Manufacturer.

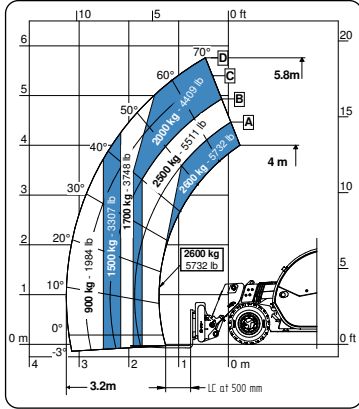


CABIN

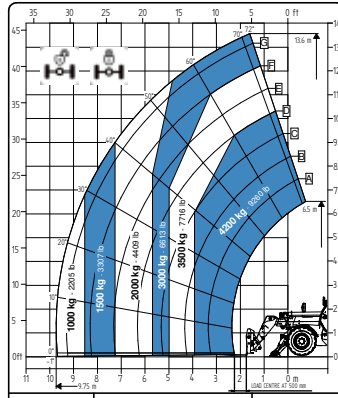
The Queen Cab is designed to optimize operator comfort by offering ample interior space and all the comforts required for continuous use.

With the proportional hydraulic control Joystick, all hydraulic functions can be safely controlled, even in difficult working conditions. The interactive color display provides the operator with all the necessary information for machine operation and control diagnostics. Lastly, the controls on the steering wheel and seat are ergonomically arranged for comfortable driving and precise movements.

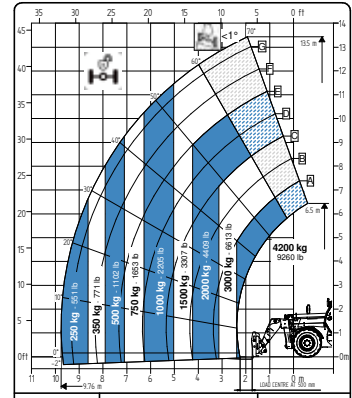




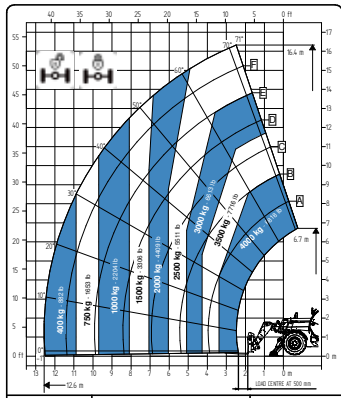
6.26



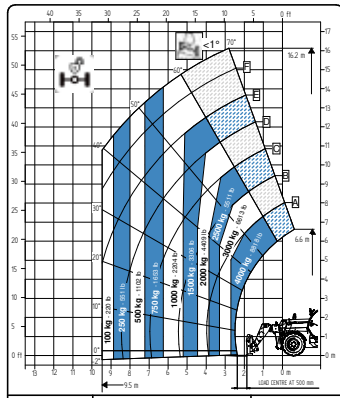
14.42



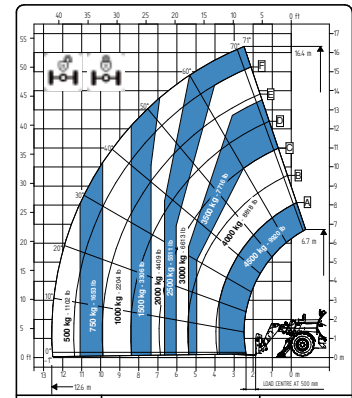
14.42



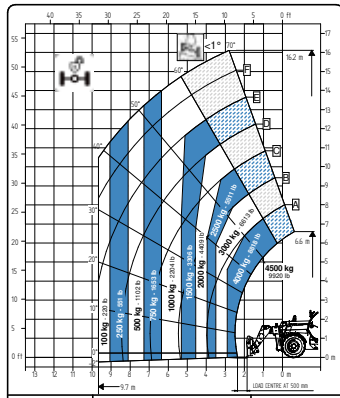
17.40



17.40



17.45



17.45



No.1 FOR LIFTING SOLUTIONS

UK SOUTHERN DEPOT: GGR UNIC House, Pegasus Way, Haddenham Business Park, Haddenham, Buckinghamshire, HP17 8LJ

Telephone: +44 (0)1844 202071 **Email:** info@electrictelehandler.co.uk

UK NORTHERN DEPOT: Presentation House, Broadgate, Broadway Business Park, Oldham, OL9 0JA

Telephone: +44 (0)161 683 2580 **Email:** info@electrictelehandler.co.uk

WWW.ELECTRICTELEHANDLER.CO.UK

The information in this brochure must be used in conjunction with the manufacturer's guidelines which are supplied with every product and are available on request. Due to the nature of product development, all technical specifications featured in this brochure are subject to change. Whilst we always strive to maintain consistency as far as it is viable, circumstances may arise where we are obliged to alter the product range and pricing without prior notice.

Please note: all dimensions and measurements specified in this product guide are approximates and some variation due to manufacturing or other changes made by suppliers are out of GGR Group's control.

Whilst every care and attention has been taken to describe the equipment and technical data accurately, customers are advised to check with GGR Group at the time of hire or purchase.