

Trolleys

Glass Stillages [2000kg]

Easily store glass, stone slabs, plasterboard, GRC panels, sheet metal and more with our dependable Glass Stillages.

The Glass Stillages from GGR gives users a maximum capacity of 2000kg (loaded evenly) with its 18mm plywood shelf base, perfect for keeping materials safe on-site ready for installing in their final location.

Heavy-duty 40mm box steel and a generous 400mm shelf on each side combined with the 2300mm length and 1800mm height gives operators ample storage space. Perfect for use on busy construction sites, warehouses, yards, material manufacturing facilities and much more.

A wider shelf is available, increasing the width from 400mm to 500mm.

Key Features

- 2000kg capacity (loaded evenly across both sides)
- 40mm box steel frame
- 400mm or 500mm shelf width
- 400mm shelf weight: 165kg (w/out lifting eyes), 170kg (w/lifting eyes)
- For hire only

Liftable Glass Stillages

Make the Glass Stillages even more adaptable with the addition of lifting eyes.

For raising or lowering the Glass Stillages from different levels, the addition of heavy-duty 15mm thick lifting eyes enables operators the ability to use mobile cranes, tower cranes, gantry cranes or spider cranes to manoeuvre and position their stillages around site.

Reference Codes

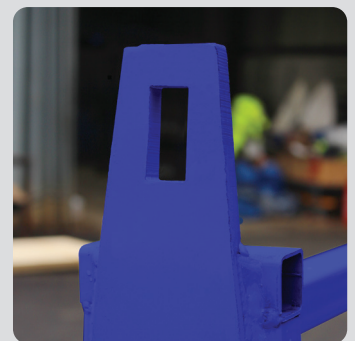
- 400mm Shelf With Lifting Eyes: **AGT83**
- 400mm Shelf Without Lifting Eyes: **AGT83A**
- 500mm Shelf With Lifting Eyes: **AGT84**
- 500mm Shelf Without Lifting Eyes: **AGT84A**



Glass Stillage without lifting eyes



Heavy-duty forklift eyes make transporting the Glass Stillages easy and safe, with them you can raise and lower the stillage to different floors.



Optional lifting eyes improve the versatility of the Glass Stillages to allow tower cranes, mobile cranes and spider cranes to be used in moving the stillage.



Glass Stillage with lifting eyes

400mm Shelf Dimensions (Without Lifting Eyes)

