

# All-New Cladding Lifter

## Mini Clad-Man Cladding Lifter **[160-300kg]**

The Mini Clad-Man has been designed to lift & install cladding panels for horizontal walls, vertical walls & roofs.

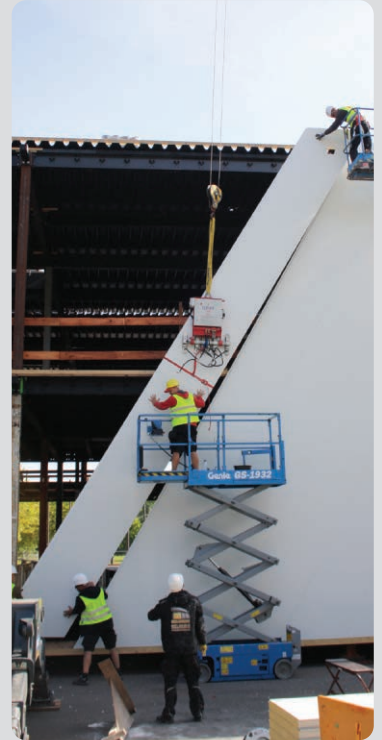
With up to 300kg lifting capacity, this cladding lifter can lift panels up to 18 metres in length, yet comes with its own compact stand for ease of transport.

The battery-operated Mini Clad-Man also features automatic power saving through electronic vacuum monitoring, which contributes to long running times to help save time and resource on site.

The Mini Clad-Man also includes individual adjustable suction cups to fit seamlessly to the load, making this cladding lifter ideal for installing panels of various lengths and profiles - an extremely versatile piece of kit.

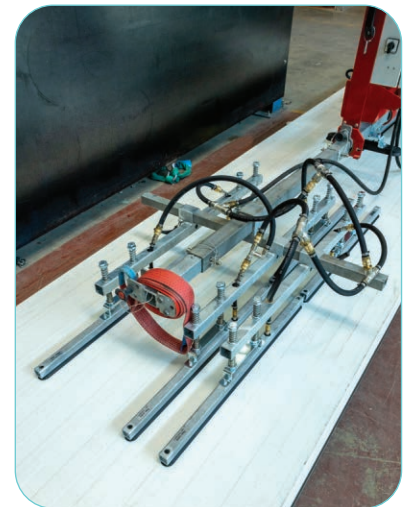
### Key Features

- Capacity: 160-300kg
- Suitable for roof panels up to 18m, horizontal wall panels up to 14m and vertical wall panels up to 12m
- Single circuit vacuum system with vacuum gauge, reserve tank non-return valve for each circuit
- 90° manual tilt
- 12v rechargeable battery with 110v or 240v charger with charge meter
- Audio-visual low vacuum alarm
- This machine is also safe for use in the rain, helping to reduce downtime on site.



### Technical Specifications

<b>Safe working load</b>	capacity:	160-300kg
<b>Number of suction cups</b>	cups:	4-6
<b>Maximum panel length</b>	horizontal:	14 metres
	vertical:	12 metres
	roof:	18 metres
<b>Suction cup</b>	approx dimensions:	80 x 400mm
<b>Suitable for lifting</b>	materials:	composite sandwich panels, (PUR, EPS, mineral wool). other materials possible, subject to testing. airtight, non-porous and not covered by protective film.
<b>Weight of lifter</b>	approx:	96-210kg (depending on configuration)
<b>Tilt</b>	tilt:	90° manual
<b>Vacuum system</b>	single circuit:	1 pump, 1 vacuum reserve tank
<b>Voltage</b>	pump:	12v DC from rechargeable battery
	battery charger:	110v/240v 50/60Hz single phase factory selectable
<b>Standard accessories</b>	standard:	6 x extension arms, secondary safety straps, transport stand
<b>Optional accessories</b>	optional:	narrow pads

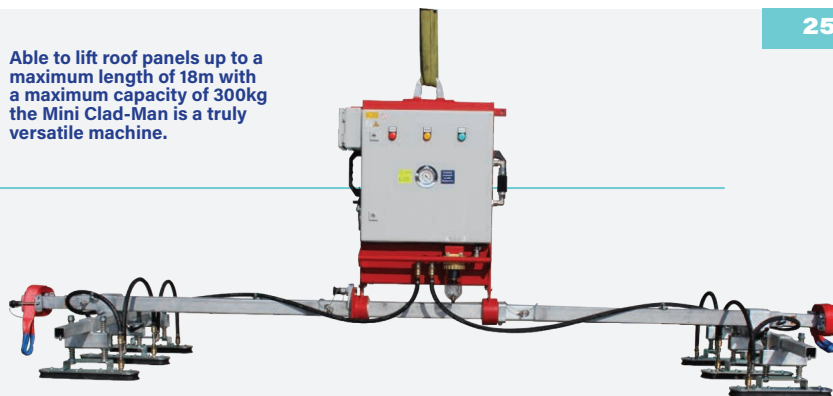


Mini Clad-Man shown with optional narrow pads.  
Capacity: 300kg with 6 suction plates (horizontal load)  
Capacity: 160kg with 4 suction plates (vertical load)

In its smallest configuration the Mini Clad-Man capacity is 160kg.



Able to lift roof panels up to a maximum length of 18m with a maximum capacity of 300kg the Mini Clad-Man is a truly versatile machine.



Reference Code  
**VCL10**

The Mini Clad-Man is able to lift wall panels, roof panels and even trapezoidal shapes thanks to its large variety of configurations.



### Mini Clad-Man Configurations

Configuration (with standard pads)	Maximum Horizontal Capacity (kg)	Maximum Vertical Capacity (kg)	Maximum Panel Length (m)	Number Of Suction Cups	Suction Cup Dimensions (mm)
<b>Roof Panels</b>					
3m with 4 pads	240kg	-	12m	4	80x400mm
4m with 4 pads	240kg	-	14m	4	80x400mm
8m with 4 pads	240kg	-	18m	4	80x400mm
3m with 6 pads	300kg	-	12m	6	80x400mm
4m with 6 pads	300kg	-	14m	6	80x400mm
8m with 6 pads	300kg	-	18m	6	80x400mm
<b>Roof Panels @ 45°</b>					
3m with 4 pads	200kg	-	12m	4	80x400mm
3m with 6 pads	300kg	-	12m	6	80x400mm
4m with 4 pads	200kg	-	14m	4	80x400mm
4m with 6 pads	220kg	-	14m	6	80x400mm
<b>Wall Panels - Horizontal</b>					
3m with 4 pads - vertical	160kg	-	12m	4	80x400mm
3m with 4 pads - horizontal	160kg	-	12m	4	80x400mm
4m with 4 pads - vertical	160kg	-	14m	4	80x400mm
4m with 4 pads - horizontal	160kg	-	14m	4	80x400mm
3m with 6 pads - vertical	240kg	-	12m	6	80x400mm
3m with 6 pads - horizontal	240kg	-	12m	6	80x400mm
4m with 6 pads - vertical	240kg	-	14m	6	80x400mm
4m with 6 pads - horizontal	240kg	-	14m	6	80x400mm
<b>Wall Panels - Vertical</b>					
90° base unit - 4 pads	-	160kg	12m	4	80x400mm
90° base unit - 6 pads	-	240kg	12m	6	80x400mm

Compact and with its own transport stand, the Mini Clad-Man can be quickly and easily transported then stored away.

