

Pick & Carry Cranes

Heavy Duty Lifting & Sh

GF180 Pick & Carry Crane [18.0t x 1.5m]

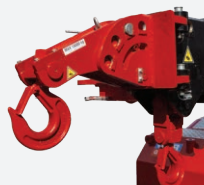
With a capacity of up to 18 tonnes, the battery powered GF180 pick and carry crane can lift, move and place heavy loads without the need for outriggers.

Benefitting from a small working footprint, the GF180 has exceptional steering control and is easy to manoeuvre on projects where working space is confined or restricted. This pick and carry crane is suitable for high precision gradual movements when lifting, picking and moving heavy loads.

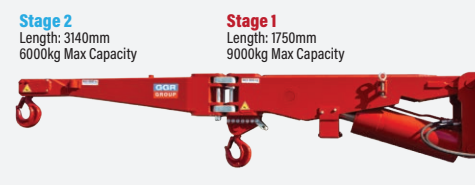
The GF180 has two optional boom extensions, offering an overall maximum lifting height of 12.4m or 14.7m, with an 18 tonne capacity rhino hook or a two-stage 9 tonne/6 tonne capacity hydraulic searcher hook available.

At just 1850mm wide, this machine is perfect for heavy lifting in some of the most confined and hard to access areas. This model also includes a radio remote control, for greater control and placement of loads and a convenient on-board battery charger.

GGR's range of pick and carry battery-powered mobile industrial cranes are proving to be a popular choice for handling, carrying, assembling, installing and removing machinery components in factory and industrial environments.



Optional Rhino Hook
18000kg Capacity

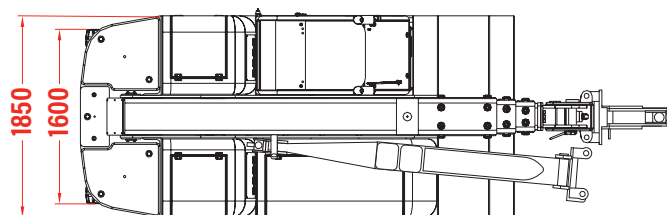
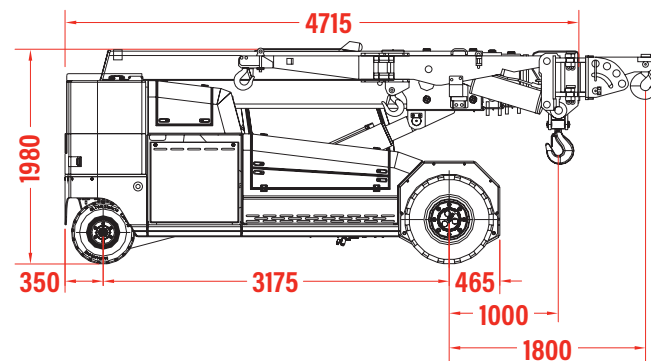


Optional Two-Stage Hydraulic Searcher Hook

Technical Specification

Capacity	18.0t x 1.5m
Max working radius	8m (8.8m with 18T rhino hook, 11.1m with two-stage hydraulic searcher hook)
Max lifting height	11.4m (12.4m with 18T rhino hook, 14.7m with two-stage hydraulic searcher hook)
Dimensions	4715mm (l) x 1850mm (w) x 1980mm (h)
Weight	18,400kg (18,810kg with two-stage hydraulic searcher hook) approx.
Boom length	4.0 - 10.5m
Boom type	4 section hydraulic box boom
Derricking angle	-8° to 70°
Steering	Rear hydraulic 180°
Steering Radius	3500mm
Tyres	2 solid rear, 4 solid front
Travel speed	8km/h
Electric power	2 x traction motors, 14kW
Power source	80v (980Ah) rechargeable battery
Battery charger	415v
Gradeability	±25° (without load)
Standard equipment	Digital safe load indicator, joystick controlled proportional distributor, audio-visual overload alarm, reversing alarm, overload warning lamps, seat and seatbelt sensor, intelligent throttle activation
Optional equipment	18t manual rhino hook, 6/9t hydraulic searcher hook, auto-levelling telehandler forks, full winch system, low marking tyres, radio remote control, reversing cameras

Technical Data (approx. mm)



Optional 18T Capacity
Rhino Hook

Lifting Made Easy

LED Worklights



Spacious Driver Cab

Reference Code
MCGF180

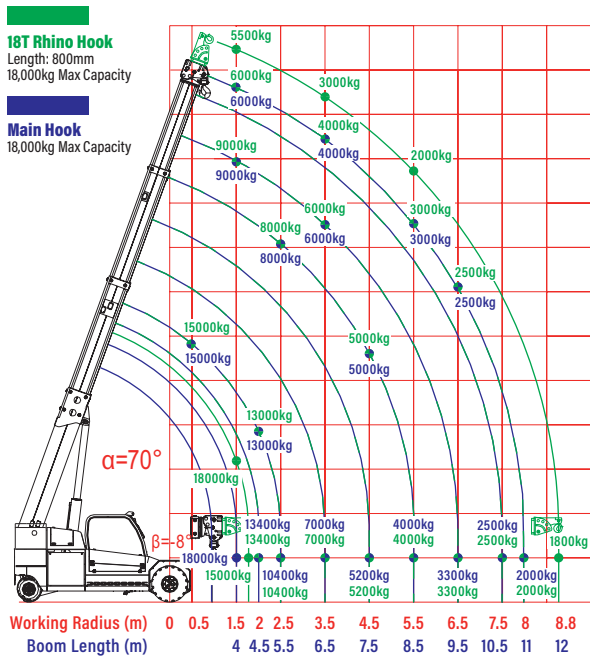
Optional radio remote



Reversing cameras and SLI integration



Main Hook & 18T Rhino Hook Rated Loads



Hydraulic Searcher Hook Rated Loads

