

Robots & Overhang Beams

Sky Robot 1500 **[1500kg]**

A UK first, the Sky Robot 1500 is an all-electric boom-lift glass installation robot that can reach up to a massive working height of 26.16m with 1200kg glass or up to 21.93m with glazing units that weigh up to 1500kg all on a 360° continuous rotating base.

Being fully powered by a rechargeable 80v 520Ah lithium battery the Sky Robot 1500 produces no noise, zero emissions and no pollution, making it a truly environmentally friendly machine.

One of the stand-out features of this powerful glazing robot is the fully articulating 3D head that can rotate 360°, tilt 90° up and 30° down and slew 80° left and right*. With a 200mm vertical and horizontal side shift function, it allows millimetre precise installation for operators. The extendable arms of the built-in vacuum lifter complete with 8 independent suction cups running on a dual circuit system allow operators to lift loads of different sizes with ease.

Coming with low marking tyres as standard this robot is perfect for working in areas with sensitive flooring such as shopping centres, warehouses, factories, and other indoor or outdoor environments.

With the Sky Robot 1500 being fully controlled by radio remote, operators can use all functions via the easy-to-use controller, a 6km/h top speed, a small turning radius of just 3.22m with an ability to traverse 3° slopes gives the Sky Robot 1500 manoeuvrability, speed, and adaptability.



Reference Code
GRG50

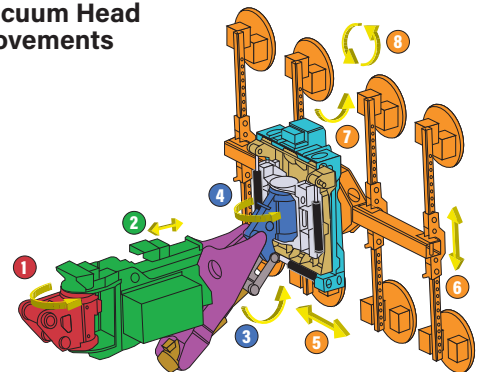
Technical Specifications

Safe working load - 8 pads		800kg	1200kg		1500kg
Safe working load - 4 pads		750kg	750kg		750kg
Max working height	Horizontal glazing	26.16m*	22.84m*	26.16m**	21.93m**
	Vertical glazing	23.59m*	20.26m*	23.59m**	19.62m**
Maximum working radius		13.95m*	11.85m*		10.85m**
Minimum turning circle (in/out)			1.87m / 3.22m		
Vacuum pads			8 or 4 x independent vacuum pads		
Gradeability (stowed)			30%		
Maximum slope			3°		
Max wind speed			12.5m/s		
Turntable rotation & tailswing			360° continuous & 1.61m tailswing		
Wheelbase			2.8m		
Weight			19,500kg		
Drive speed			6 km/h (stowed) / 11km/h (raised or extended)		
Drive motor			18Kw @ 3243rpm		
Lifting motor			24Kw @ 2150rpm		
Power			80v 520Ah lithium battery		
Charger			110v 32A built-in charger		

Standard accessories

radio remote control, tilt alarm, descent & motion alarm, flashing beacon, horn, hour meter, turntable lock, load sense system, harsh environment kit (cylinder protector, boom dust kit, ground control box cover)

Vacuum Head Movements



N°	Movement Name	Movement Amount
1	Elbow Slewing	up to +/- 80° left & right*
2	Elbow Telescoping	up to 300mm***
3	Wrist Tilting	-90° / +30°
4	Wrist Slewing	60° left & right
5	Lateral Sideshift	200mm
6	Vertical Sideshift	200mm
7	Head Tilting	-90° / +82.5°****
8	Head Rotation	360° continuous

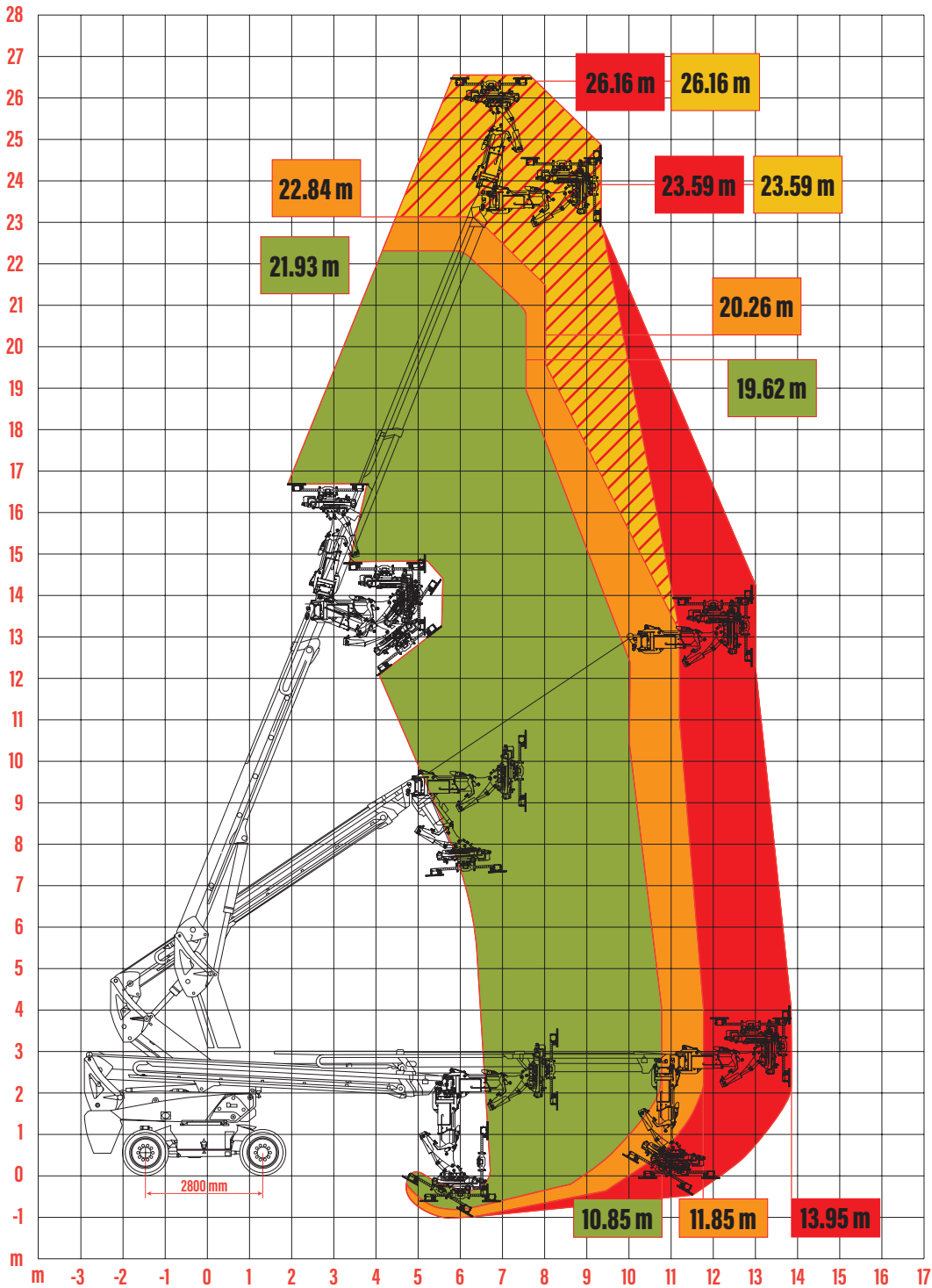
* Elbow Slewing of +/- 80° is only possible on loads & heights in **red** and **dark orange** in the Technical Specifications table.

** Elbow Slewing is restricted to +/- 15° for loads & heights in **orange** and **green** in the Technical Specifications table.

*** Elbow Telescoping to 300mm is only on loads up to 1200kg, loads above that weight telescoping is restricted to 100mm.

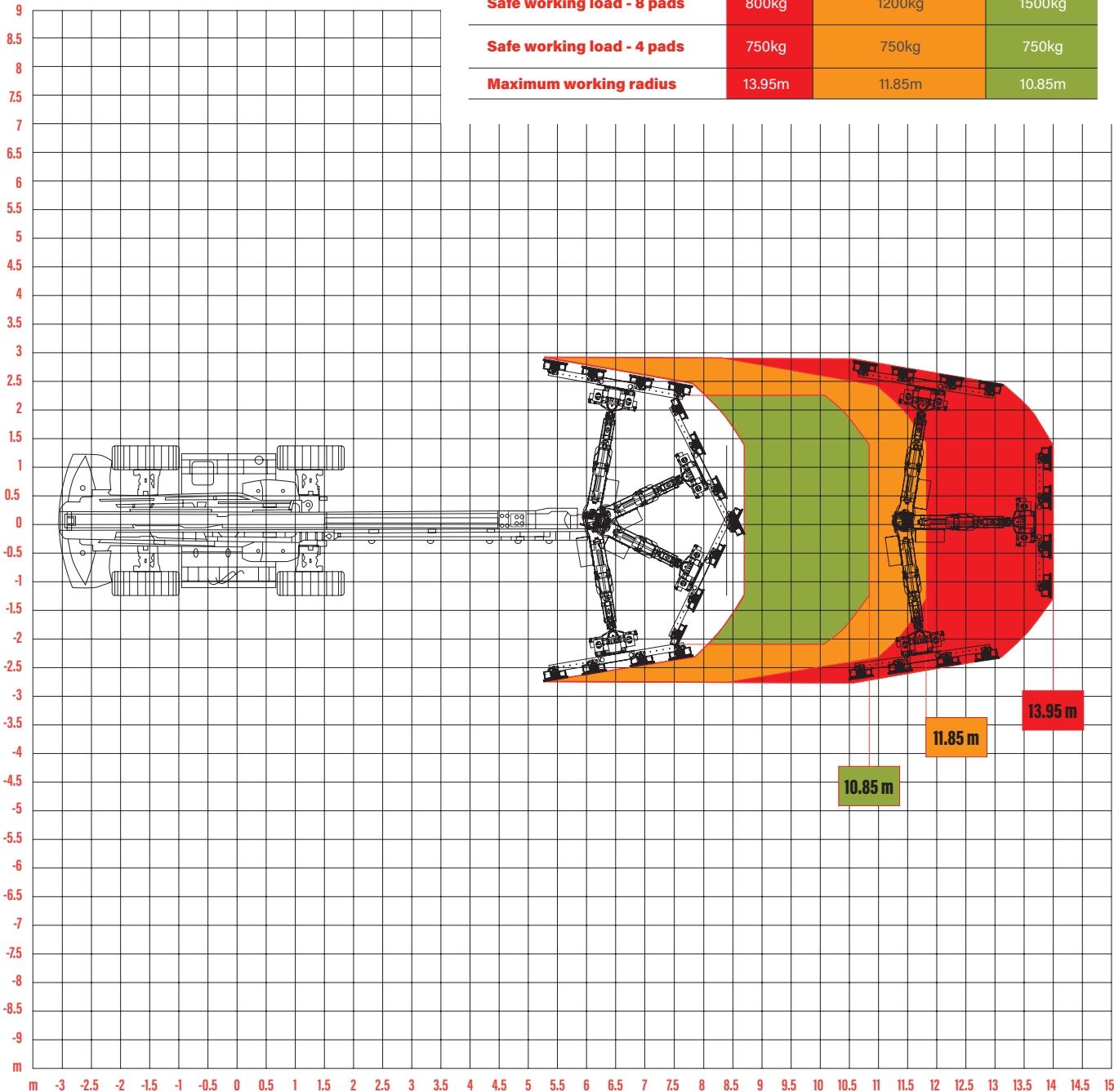
**** Head Tilting -90° - 82.5° is co-ordinated by the main boom luffing.

Rated Loads



Robots & Overhang Beams

Rated Loads



The Sky Robot 1500 is charged via a 110v 32A charger



The control panel on the machine has a built-in display showing modes and capacities.

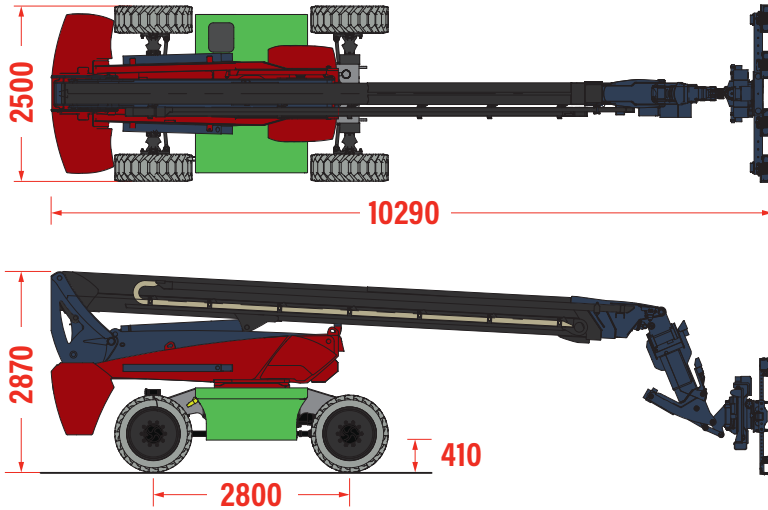


The Sky Robot 1500 comes with 8 black rubber vacuum pads to provide safe and reliable suction power.

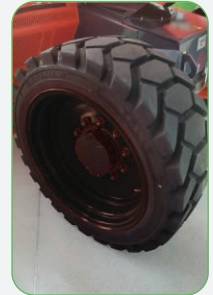


The adjustable arms of the Sky Robot 1500 allow operators to lift glass of various sizes up to 1500kg in weight

Technical Data (mm)



Low marking tyres
come as standard



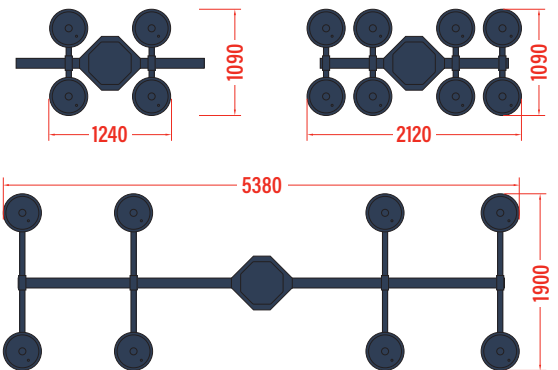
Optional normal tyres



The Sky Robot 1500 is controlled by a
high precision radio remote control

8 suction cups on an extendable
frame allow the Sky Robot 1500 to
tackle various sizes of glazing

Min/Max Pad Spread (mm)



Please Note: When used in a 4-pad configuration the maximum capacity is decreased to 750kg.
See Technical Specifications table for more information.



The Sky Robot 1500 has a maximum working radius of 13.95m
and a maximum lifting height of 26.16m (capacity reduced)

The 360° turntable offers
users the ability to pick
up, rotate and install in a
small working area

Four wheel drive
and steering gives
operators reliable
grip and power